

SPECIFICATIONS

Structure

Shell
RCC Framed structure design as per Indian Code

Masonry
AAC Block masonry of 200mm/150mm/100mm Thickness for external & internal walls

Plastering
Cement mortar plastering for external walls. Cement mortar/Cypsum Plaster for internal walls

Flooring

Living , dining , bedrooms & Kitchen
600mmx600mm double charged vitrified tile of reputed make flooring with spacer joint.

Bathrooms/Balcony/Utility - Anti-Skid Vitrified/Ceramic Tiles

Corridors - Vitrified tiles of reputed make

Staircase - Step Tile/Natural Stone

Parking & Driveways - Vacuum Dewatered Concrete Flooring /Pavers

Wall Dadoing

Bathrooms - Vitrified/Ceramic Tiles up to Door height

Kitchen - Vitrified/Ceramic Tiles up to 2' above platform

Utility - Vitrified/Ceramic Tiles up to 3'6" Height

All Bathrooms

EWC with Flush Tank, wash basin, one wall mixer of reputed make and provision for geyser

Kitchen
Granite platform with stainless steel sink. Provision for water purifier.

Electrical

Concealed Copper wiring of reputed make

Power outlet for Air-conditioner in all bedrooms and living

Power outlets for geysers in all bathrooms

Power outlets for Chimney, Refrigerator, Microwave Oven, mixer/grinder in kitchen

Washing machine point in utility area

3 Phase supply for each unit and individual meter boards

Miniature Circuit Breakers(MCB) for each distribution board of reputed make

Modular switches of reputed make



LIFT LOBBY

ENTRANCE LOBBY



ENTRANCE LOBBY

Doors & Windows

Doors
Hardwood frame or factory made wooden frames with both sides laminated flush shutter with reputed make

Balcony Door
UPVC glazed French sliding doors with mosquito mesh provision

Utility Door
UPVC partly glazed door

Windows
All windows are UPVC glazed sliding/Openable shutters with MS Grill and provision for mosquito shutter

Painting

Internal
Smoothly finished with putty and acrylic emulsion

Enamel paint on all MS railing

External
Textured paint for external walls

TV/Telephone

Fibre to home with Internet, telephone and DTH.

Fire Safety

Fire Alarm, Automatic sprinklers and wet rises as per Fire authority regulations

Security

Comprehensive security system with cameras in appropriate locations.

Lifts

V3F drive high speed lifts of reputed make

Power Backup

Metered backup power up to a limit of 5.0 KVA per unit

WTP & STP

Water treatment plant for bore-well and water meter for each unit

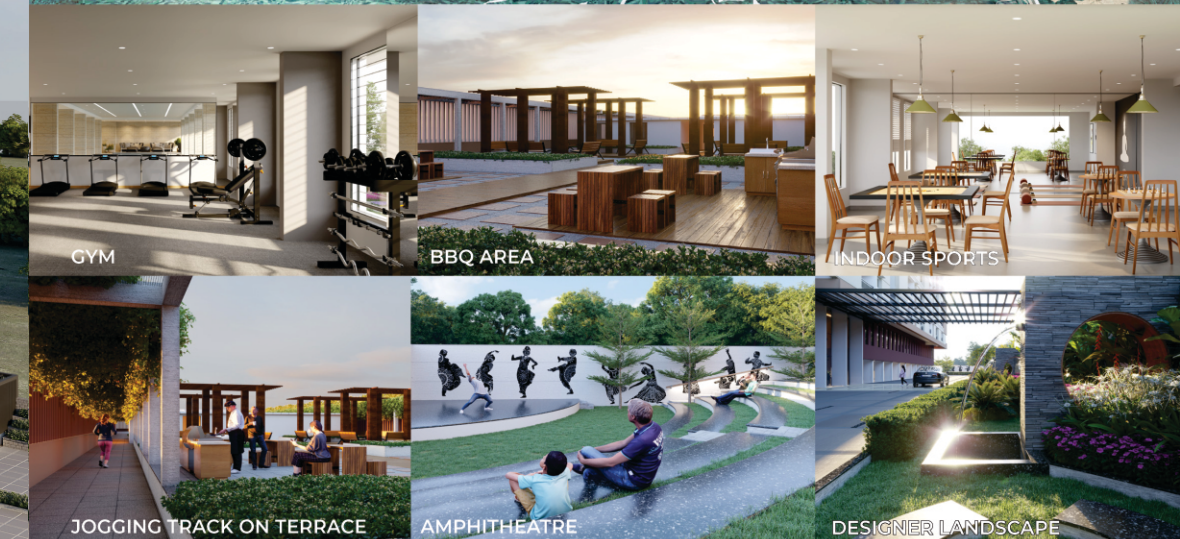
A Sewage treatment plant of adequate capacity as per norms will be provided inside the project. Treated sewage water will be used for landscaping and carwash

Piped LPG

Supply of gas from centralized gas bank to all individual flats with gas meters



INDOOR SWIMMING POOL



GYM

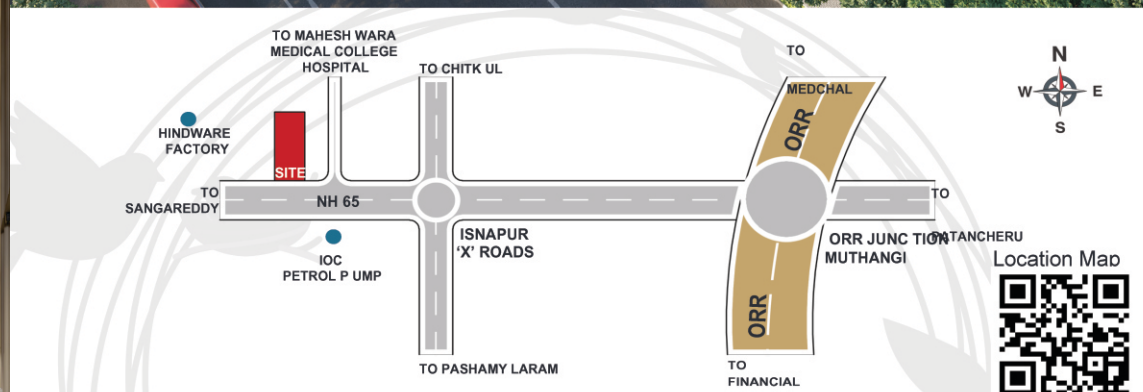
BBQ AREA

INDOOR SPORTS

JOGGING TRACK ON TERRACE

AMPHITHEATRE

DESIGNER LANDSCAPE



Marketed by: **SREE BHARATHI INFRA**
Citizen's Kapur Towers, Flat No.502, 5th Floor, H.No.6-3-347/9A, Dwarakapuri Colony, Punjagutta, Hyderabad, TS-82

www.bhavanihighnest.com | www.sandheera.com | sreebharathiinfraglobal26@gmail.com | www.sreebharathi.com

Sandheera Infratech Pvt Ltd
Project Marketing Office : Sy No 238 , Isnapur X Ro ads , Isnapur , Hy derabad-502307
Corporate Office: H No 3-12-92/67, Rock Town Colony, Mansoor abad, L B Na gar, Hyderabad-500068

Note: This Brochure is purely a conceptual presentation and not a legal offering. The Company reserves the right to make changes in elevation, specifications and plans as deemed fit. For easier understanding 3m = 10ft conversion

Area Statement	Flat Nos	Carpet Area	Exclusive Balcony Area	Saleable Area
3, 4, 10, 11	8, 9, 12, 13, 23, 31	767 SR	123 SR	1273 SR
			167 SR	1428 SR

A HOME AFTER YOUR HEART

Marketed by: **SREE BHARATHI INFRA**
TS RERA A02500002007



BANQUET HALL



LEGEND

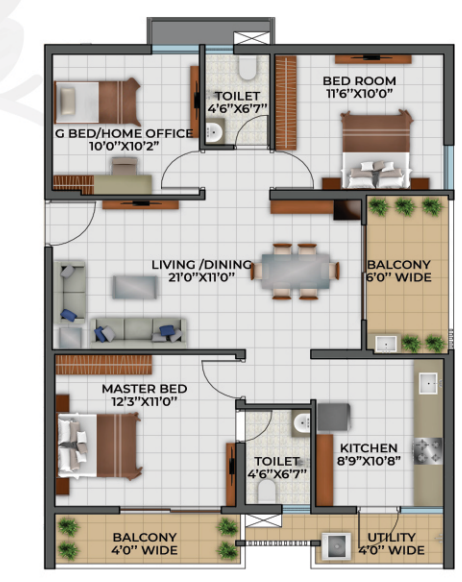
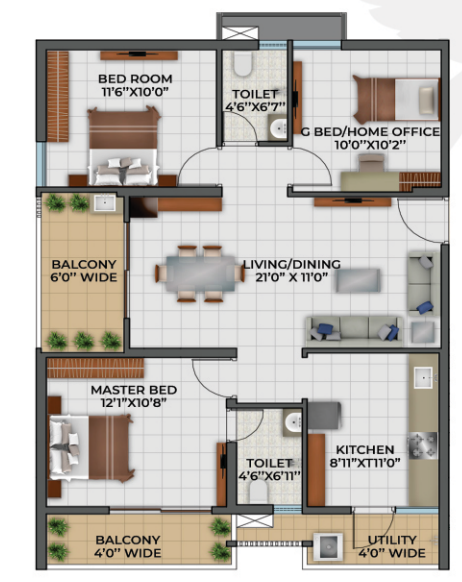
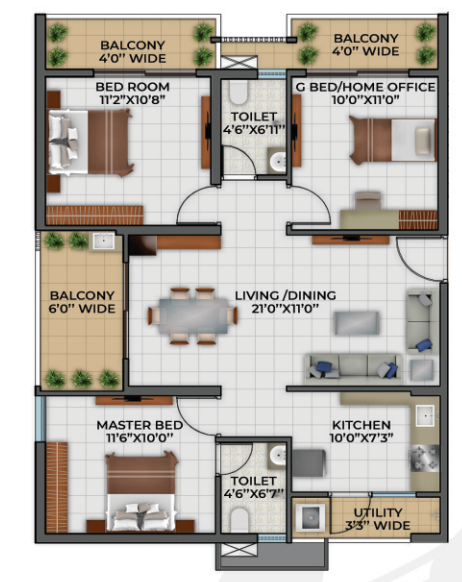
- 1. Entry
- 2. Security Gate
- 3. Drop-off
- 4. Garden
- 5. Water Body
- 6. Amphitheatre
- 7. Badminton Courts
- 8. Cricket Pitch
- 9. Kids Play Area
- 10. Visitor Car Parking
- 11. Utilities

UNIT TYPE A
1428 SFT | EAST FACING | 3BHK

UNIT TYPE C
1273 SFT | EAST FACING | 3BHK

UNIT TYPE E
1428 SFT | EAST FACING | 3BHK

UNIT TYPE E
1428 SFT | EAST FACING | 3BHK



UNIT TYPE B
1428 SFT | WEST FACING | 3BHK

UNIT TYPE D
1273 SFT | WEST FACING | 3BHK

UNIT TYPE F
1428 SFT | WEST FACING | 3BHK

